

White Columns

Project: **Matthew Schrader**
M. Obultra 3

March 23-May 15, 2021



Matthew Schrader

'Ailanthus' and 'Sun' from M. Obultra 3, 2020

Fuji Crystal Archive paper and PVC film

7 x 5 in. each, dimensions variable
(Inv #MSc001)



Matthew Schrader

'Ailanthus' from M. Obultra 3, 2020

Ailanthus Altissima seeds and vitrine
Dimensions variable

(Inv# MSc002)



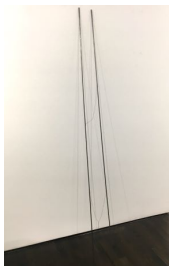
Matthew Schrader

'Measures' from M. Obultra 3, 2020

Woodblock print on Stonehenge
cotton rag paper

44 x 11 in.

(Inv# MSc003)



Matthew Schrader

'Untitled', 2021

Steel and thread

72 in. each, dimensions variable

(Inv# MSc005)



Matthew Schrader

'Ailanthus', 2021

Kodak Royal paper, ink and tape

12 x 12 in.

(Inv# MSc006)



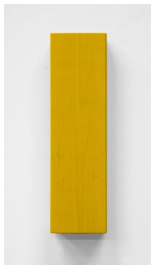
Matthew Schrader

'Measure', 2021

Wood

Dimensions variable

(Inv# MSc008)



Matthew Schrader

'Measures' from M. Obultra 3, 2020

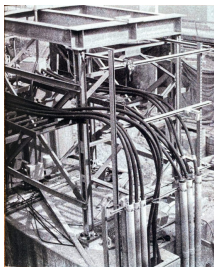
Eastern white pine, latex paint

(Benjamin Moore 'Abstracta'), paste

wax

12 x 3.5 in. each, dimensions variable

(Inv# MSc004)



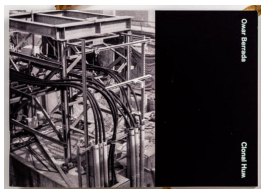
Matthew Schrader

'Hum', 2021

Xerox photocopy

6 x 4 in.

(Inv# MSc007)



Omar Berrada

'Clonal Hum' from M. Obultra 3, 2020

Chapbook, 32 pages

4.75 x 6.75 in.

(Inv# MSc009)